

CHRISTOPHER HODGSON



Cliffsend, Ramsgate
£350,000 Freehold

FOR COASTAL, COUNTRY
& CITY LIVING

Cliffsend, Ramsgate

28 King Arthur Road, Cliffsend, Ramsgate, Kent, CT12 5DX

A spacious detached bungalow ideally situated in a peaceful cul-de sac within the desirable village of Cliffsend and conveniently positioned for access to Ramsgate's Royal Harbour, Westwood Shopping Centre, local Golf Clubs and Pegwell Country Park. The property is within close proximity of the newly opened Thanet Parkway Station (1.4 miles), which provides high speed services to London.

The generously proportioned and smartly presented accommodation comprises an entrance hall, sitting room, kitchen, conservatory, two double bedrooms (both with en-suite shower rooms), a study/third bedroom and a family bathroom.

The Westerly facing garden extends to 41ft (13m) and incorporates a patio and an area laid to lawn. A block paved driveway and detached garage provides off road parking for several vehicles. No onward chain.



LOCATION

Cliffsend is a desirable village approximately 2 miles west of the marina town of Ramsgate and approximately 4 miles North of Sandwich. The village forms part of the Pegwell Bay Country Park Sandwich and Pegwell Bay Nature Reserve which is a Ramsar Site of International Importance, home to spectacular bird life that is designated as a protected area under UK and EU legislation and is also considered a world class wetlands. Also on permanent display on the cliff top at Pegwell Bay is a replica of the Viking longship Hugin, which sailed from Denmark to Thanet in 1949 to celebrate the 1500th anniversary of the invasion of Britain. Ramsgate boasts one of the largest marinas on the South coast, as well as a bustling high street, a number of highly regarded bars and restaurants, a Blue Flag Beach and mainline railway station. The Cinque Port town of Sandwich is one of the best preserved medieval towns in the UK, a thriving market town with individual shops, bars and restaurants and renowned for its golf courses, including the famous Royal St George's, which regularly hosts The Open Championship.

Thanet Parkway Station provides high speed services to London St Pancras via Ashford. The high speed Javelin service provides access to London (St Pancras) with a journey time of approximately 72 minutes. Cross Channel ferries are available from the port of Dover (16.9 miles) and the Eurotunnel Terminal at Cheriton. The A256 is also easily accessible offering access to the A2/M2 and subsequent motorway network.

ACCOMMODATION

The accommodation and approximate measurements (taken at maximum points) are:

GROUND FLOOR

- Entrance Hall 10'6" x 4'9" (3.20m x 1.45m)
- Sitting Room 16'6" x 13'3" (5.03m x 4.04m)
- Kitchen 10'1" x 8'3" (3.07m x 2.51m)
- Bedroom 1 11'3" x 10'5" (3.43m x 3.18m)
- En Suite Shower Room
- Bedroom 2 12'4" x 10'1" (3.75m x 3.08m)
- En Suite Shower Room
- Bedroom 3 10'1" x 8'0" (3.07m x 2.44m)
- Bathroom
- Conservatory 16'9" x 14 (5.11m x 4.27m)

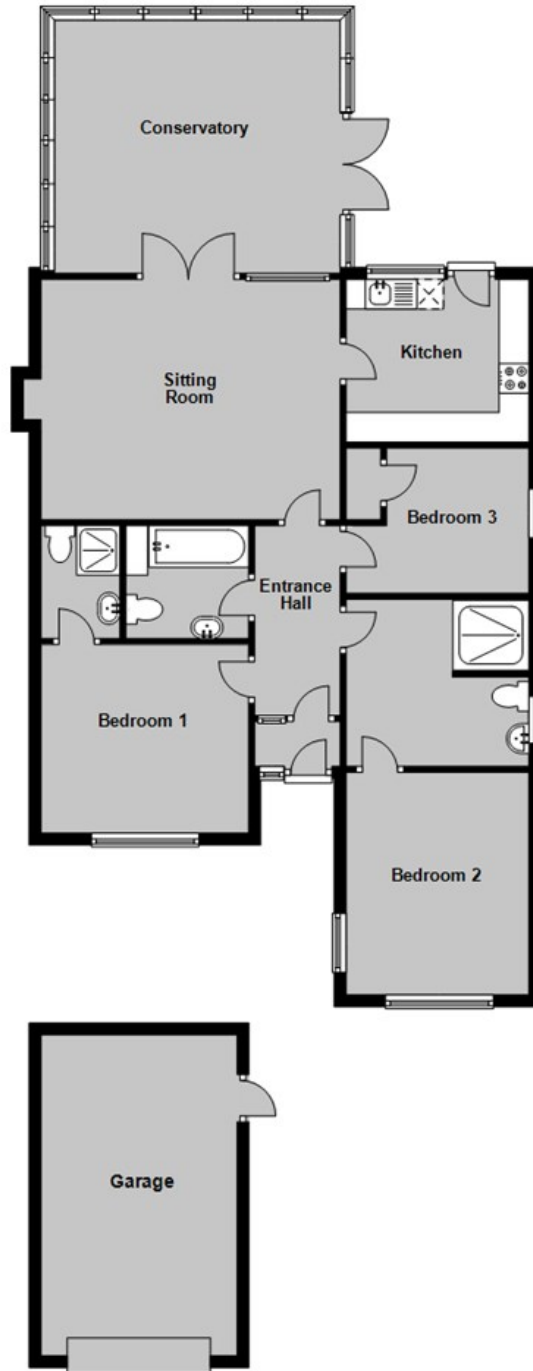
OUTSIDE

- Garage 17'9 x 10'10 (5.41m x 3.30m)
- Garden 41 x 39 (12.50m x 11.89m)



Ground Floor

Main area: approx. 104.5 sq. metres (1125.3 sq. feet)
Plus garages, approx. 17.6 sq. metres (192.1 sq. feet)



Main area: Approx. 104.5 sq. metres (1125.3 sq. feet)
Plus garages, approx. 17.6 sq. metres (192.1 sq. feet)

Council Tax Band C. The amount payable under tax band C for the year 2025/2026 is £2,096.50

Christopher Hodgson Estate Agents for itself and as for the vendor or lessor (as appropriate) gives notice that: 1 These particulars are only a general outline for the guidance of intending purchasers or lessees and do not constitute in whole or in part an offer or a Contract. 2 Reasonable endeavours have been made to ensure that the information given in these particulars is materially correct but any intending purchaser or lessee should satisfy themselves by inspection, searches, enquiries and survey as to the correctness of each statement. 3 All statements in these particulars are made without responsibility on the part of Christopher Hodgson Estate Agents or the vendor or lessor. 4 No statement in these particulars is to be relied upon as a statement or representation of fact. 5 Neither Christopher Hodgson Estate Agents nor anyone in its employment or acting on its behalf has authority to make any representation or warranty in relation to this property. 6 Nothing in these particulars shall be deemed to be a statement that the property is in good repair or condition or otherwise nor that any services or facilities are in good working order. 7 Photographs may show only certain parts and aspects of the property at the time when the photographs were taken and you should rely upon actual inspection. 8 No assumption should be made in respect of parts of the property not shown in photographs. 9 Any areas, measurements or distances are only approximate. 10 Any reference to alterations or use is not intended to be a statement that any necessary planning, building regulation, listed building or any other consent has been obtained. 11 Amounts quoted are exclusive of VAT if applicable. 12 Whilst reasonable endeavours have been made to ensure the accuracy of any floor plan contained in these particulars, all measurements and areas are approximate and no responsibility is taken for any error, omission or mis-statement. This plan is for illustrative purposes only and should be used as such by any prospective purchaser. 13 Any mapping contained within these particulars is for illustrative purposes only and should be used as such by any prospective purchaser. No responsibility is taken for any error, omission or mis-statement. 14 Any computer generated images contained within these particulars are for illustrative purposes only and should be used as such by any prospective purchaser.

Energy Efficiency Rating	
Energy efficient - lower rating code	Energy efficient - higher rating code
Rating A	Rating G
Rating B	Rating H
Rating C	Rating I
Rating D	Rating J
Rating E	Rating K
Rating F	Rating L
Rating G	Rating M
Rating H	Rating N
Rating I	Rating O
Rating J	Rating P
Rating K	Rating Q
Rating L	Rating R
Rating M	Rating S
Rating N	Rating T
Rating O	Rating U
Rating P	Rating V
Rating Q	Rating W
Rating R	Rating X
Rating S	Rating Y
Rating T	Rating Z
Rating U	Rating AA
Rating V	Rating AB
Rating W	Rating AC
Rating X	Rating AD
Rating Y	Rating AE
Rating Z	Rating AF
Rating AA	Rating AG
Rating AB	Rating AH
Rating AC	Rating AI
Rating AD	Rating AJ
Rating AE	Rating AK
Rating AF	Rating AL
Rating AG	Rating AM
Rating AH	Rating AN
Rating AI	Rating AO
Rating AJ	Rating AP
Rating AK	Rating AQ
Rating AL	Rating AR
Rating AM	Rating AS
Rating AN	Rating AT
Rating AO	Rating AU
Rating AP	Rating AV
Rating AQ	Rating AW
Rating AR	Rating AX
Rating AS	Rating AY
Rating AT	Rating AZ
Rating AU	Rating BA
Rating AV	Rating BB
Rating AW	Rating BC
Rating AX	Rating BD
Rating AY	Rating BE
Rating AZ	Rating BF
Rating BA	Rating BG
Rating BB	Rating BH
Rating BC	Rating BI
Rating BD	Rating BJ
Rating BE	Rating BK
Rating BF	Rating BL
Rating BG	Rating BM
Rating BH	Rating BN
Rating BI	Rating BO
Rating BJ	Rating BP
Rating BK	Rating BQ
Rating BL	Rating BR
Rating BM	Rating BS
Rating BN	Rating BT
Rating BO	Rating BU
Rating BP	Rating BV
Rating BQ	Rating BW
Rating BR	Rating BX
Rating BS	Rating BY
Rating BT	Rating BZ
Rating BU	Rating CA
Rating BV	Rating CB
Rating BW	Rating CC
Rating BX	Rating CD
Rating BY	Rating CE
Rating BZ	Rating CF
Rating CA	Rating CG
Rating CB	Rating CH
Rating CC	Rating CI
Rating CD	Rating CJ
Rating CE	Rating CK
Rating CF	Rating CL
Rating CG	Rating CM
Rating CH	Rating CN
Rating CI	Rating CO
Rating CJ	Rating CP
Rating CK	Rating CQ
Rating CL	Rating CR
Rating CM	Rating CS
Rating CN	Rating CT
Rating CO	Rating CU
Rating CP	Rating CV
Rating CQ	Rating CW
Rating CR	Rating CX
Rating CS	Rating CY
Rating CT	Rating CZ
Rating CU	Rating DA
Rating CV	Rating DB
Rating CW	Rating DC
Rating CX	Rating DD
Rating CY	Rating DE
Rating CZ	Rating DF
Rating DA	Rating DG
Rating DB	Rating DH
Rating DC	Rating DI
Rating DD	Rating DJ
Rating DE	Rating DK
Rating DF	Rating DL
Rating DG	Rating DM
Rating DH	Rating DN
Rating DI	Rating DO
Rating DJ	Rating DP
Rating DK	Rating DQ
Rating DL	Rating DR
Rating DM	Rating DS
Rating DN	Rating DT
Rating DO	Rating DU
Rating DP	Rating DV
Rating DQ	Rating DW
Rating DR	Rating DX
Rating DS	Rating DY
Rating DT	Rating DZ
Rating DU	Rating EA
Rating DV	Rating EB
Rating DW	Rating EC
Rating DX	Rating ED
Rating DY	Rating EE
Rating DZ	Rating EF
Rating EA	Rating EG
Rating EB	Rating EH
Rating EC	Rating EI
Rating ED	Rating EJ
Rating EE	Rating EK
Rating EF	Rating EL
Rating EG	Rating EM
Rating EH	Rating EN
Rating EI	Rating EO
Rating EJ	Rating EP
Rating EK	Rating EQ
Rating EL	Rating ER
Rating EM	Rating ES
Rating EN	Rating ET
Rating EO	Rating EU
Rating EP	Rating EV
Rating EQ	Rating EW
Rating ER	Rating EX
Rating ES	Rating EY
Rating ET	Rating EZ
Rating EU	Rating FA
Rating EV	Rating FB
Rating EW	Rating FC
Rating EX	Rating FD
Rating EY	Rating FE
Rating EZ	Rating FF
Rating FA	Rating FG
Rating FB	Rating FH
Rating FC	Rating FI
Rating FD	Rating FJ
Rating FE	Rating FK
Rating FF	Rating FL
Rating FG	Rating FM
Rating FH	Rating FN
Rating FI	Rating FO
Rating FJ	Rating FP
Rating FK	Rating FQ
Rating FL	Rating FR
Rating FM	Rating FS
Rating FN	Rating FT
Rating FO	Rating FU
Rating FP	Rating FV
Rating FQ	Rating FW
Rating FR	Rating FX
Rating FS	Rating FY
Rating FT	Rating FZ
Rating FU	Rating GA
Rating FV	Rating GB
Rating FW	Rating GC
Rating FX	Rating GD
Rating FY	Rating GE
Rating FZ	Rating GF
Rating GA	Rating GG
Rating GB	Rating GH
Rating GC	Rating GI
Rating GD	Rating GJ
Rating GE	Rating GK
Rating GF	Rating GL
Rating GG	Rating GM
Rating GH	Rating GN
Rating GI	Rating GO
Rating GJ	Rating GP
Rating GK	Rating GQ
Rating GL	Rating GR
Rating GM	Rating GS
Rating GN	Rating GT
Rating GO	Rating GU
Rating GP	Rating GV
Rating GQ	Rating GW
Rating GR	Rating GX
Rating GS	Rating GY
Rating GT	Rating GZ
Rating GU	Rating HA
Rating GV	Rating HB
Rating GW	Rating HC
Rating GX	Rating HD
Rating GY	Rating HE
Rating GZ	Rating HF
Rating HA	Rating HG
Rating HB	Rating HH
Rating HC	Rating HI
Rating HD	Rating HJ
Rating HE	Rating HK
Rating HF	Rating HL
Rating HG	Rating HM
Rating HH	Rating HN
Rating HI	Rating HO
Rating HJ	Rating HP
Rating HK	Rating HQ
Rating HL	Rating HR
Rating HM	Rating HS
Rating HN	Rating HT
Rating HO	Rating HU
Rating HP	Rating HV
Rating HQ	Rating HW
Rating HR	Rating HX
Rating HS	Rating HY
Rating HT	Rating HZ
Rating HU	Rating IA
Rating HV	Rating IB
Rating HW	Rating IC
Rating HX	Rating ID
Rating HY	Rating IE
Rating HZ	Rating IF
Rating IA	Rating IG
Rating IB	Rating IH
Rating IC	Rating II
Rating ID	Rating IJ
Rating IE	Rating IK
Rating IF	Rating IL
Rating IG	Rating IM
Rating IH	Rating IN
Rating II	Rating IO
Rating IJ	Rating IP
Rating IK	Rating IQ
Rating IL	Rating IR
Rating IM	Rating IS
Rating IN	Rating IT
Rating IO	Rating IU
Rating IP	Rating IV
Rating IQ	Rating IW
Rating IR	Rating IX
Rating IS	Rating IY
Rating IT	Rating IZ
Rating IU	Rating JA
Rating IV	Rating JB
Rating IW	Rating JC
Rating IX	Rating JD
Rating IY	Rating JE
Rating IZ	Rating JF
Rating JA	Rating JG
Rating JB	Rating JH
Rating JC	Rating JI
Rating JD	Rating JJ
Rating JE	Rating JK
Rating JF	Rating JL
Rating JG	Rating JM
Rating JH	Rating JN
Rating JI	Rating JO
Rating JJ	Rating JP
Rating JK	Rating JQ
Rating JL	Rating JR
Rating JM	Rating JS
Rating JN	Rating JT
Rating JO	Rating JU
Rating JP	Rating JV
Rating JQ	Rating JW
Rating JR	Rating JX
Rating JS	Rating JY
Rating JT	Rating JZ
Rating JU	Rating KA
Rating JV	Rating KB
Rating JW	Rating KC
Rating JX	Rating KD
Rating JY	Rating KE
Rating JZ	Rating KF
Rating KA	Rating KG
Rating KB	Rating KH
Rating KC	Rating KI
Rating KD	Rating KJ
Rating KE	Rating KK
Rating KF	Rating KL
Rating KG	Rating KM
Rating KH	Rating KN
Rating KI	Rating KO
Rating KJ	Rating KP
Rating KK	Rating KQ
Rating KL	Rating KR
Rating KM	Rating KS
Rating KN	Rating KT
Rating KO	Rating KU
Rating KP	Rating KV
Rating KQ	Rating KW
Rating KR	Rating KX
Rating KS	Rating KY
Rating KT	Rating KZ
Rating KU	Rating LA
Rating KV	Rating LB
Rating KW	Rating LC
Rating KX	Rating LD
Rating KY	Rating LE
Rating KZ	Rating LF
Rating LA	Rating LG
Rating LB	Rating LH
Rating LC	Rating LI
Rating LD	Rating LJ
Rating LE	Rating LK
Rating LF	Rating LL
Rating LG	Rating LM
Rating LH	Rating LN
Rating LI	Rating LO
Rating LJ	Rating LP
Rating LK	Rating LQ
Rating LL	Rating LR
Rating LM	Rating LS
Rating LN	Rating LT
Rating LO	Rating LU
Rating LP	Rating LV
Rating LQ	Rating LW
Rating LR	Rating LX
Rating LS	Rating LY
Rating LT	Rating LZ
Rating LU	Rating MA
Rating LV	Rating MB
Rating LW	Rating MC
Rating LX	Rating MD
Rating LY	Rating ME
Rating LZ	Rating MF
Rating MA	Rating MG
Rating MB	Rating MH
Rating MC	Rating MI
Rating MD	Rating MJ
Rating ME	Rating MK
Rating MF	Rating ML
Rating MG	Rating MM
Rating MH	Rating MN
Rating MI	Rating MO
Rating MJ	Rating MP
Rating MK	Rating MQ
Rating ML	Rating MR
Rating MM	Rating MS
Rating MN	Rating MT
Rating MO	Rating MU
Rating MP	Rating MV
Rating MQ	Rating MW
Rating MR	Rating MX
Rating MS	Rating MY
Rating MT	Rating MZ
Rating MU	Rating NA
Rating MV	Rating NB
Rating MW	Rating NC
Rating MX	Rating ND
Rating MY	Rating NE
Rating MZ	Rating NF
Rating NA	Rating NG
Rating NB	Rating NH
Rating NC	Rating NI
Rating ND	Rating NJ
Rating NE	Rating NK
Rating NF	Rating NL
Rating NG	Rating NM
Rating NH	Rating NN
Rating NI	Rating NO
Rating NJ	Rating NP
Rating NK	Rating NQ
Rating NL	Rating NR
Rating NM	Rating NS
Rating NN	Rating NT
Rating NO	Rating NU
Rating NP	Rating NV
Rating NQ	Rating NW
Rating NR	Rating NX
Rating NS	Rating NY
Rating NT	Rating NZ
Rating NU	Rating OA
Rating NV	Rating OB
Rating NW	Rating OC
Rating NX	Rating OD
Rating NY	Rating OE
Rating NZ	Rating OF
Rating OA	Rating OG
Rating OB	Rating OH
Rating OC	Rating OI
Rating OD	Rating OJ
Rating OE	Rating OK
Rating OF	Rating OL
Rating OG	Rating OM
Rating OH	Rating ON
Rating OI	Rating OO
Rating OJ	Rating OP
Rating OK	Rating OQ
Rating OL	Rating OR
Rating OM	Rating OS
Rating ON	Rating OT
Rating OO	Rating OU
Rating OP	Rating OV
Rating OQ	Rating OW
Rating OR	Rating OX
Rating OS	Rating OY
Rating OT	Rating OZ
Rating OU	Rating PA
Rating OV	Rating PB
Rating OW	Rating PC
Rating OX	Rating PD
Rating OY	Rating PE
Rating OZ	Rating PF
Rating PA	Rating PG
Rating PB	Rating PH
Rating PC	Rating PI
Rating PD	Rating PJ
Rating PE	Rating PK
Rating PF	Rating PL
Rating PG	Rating PM
Rating PH	Rating PN
Rating PI	Rating PO
Rating PJ	Rating PP
Rating PK	Rating PQ
Rating PL	Rating PR
Rating PM	Rating PS
Rating PN	Rating PT
Rating PO	Rating PU
Rating PP	Rating PV
Rating PQ	Rating PW
Rating PR	Rating PX
Rating PS	Rating PY
Rating PT	Rating PZ
Rating PU	Rating QA
Rating PV	Rating QB
Rating PW	Rating QC
Rating PX	Rating QD
Rating PY	Rating QE
Rating PZ	Rating QF
Rating QA	Rating QG
Rating QB	Rating QH
Rating QC	Rating QI
Rating QD	Rating QJ
Rating QE	Rating QK
Rating QF	Rating QL
Rating QG	Rating QM
Rating QH	Rating QN
Rating QI	Rating QO
Rating QJ	Rating QP
Rating QK	Rating QQ
Rating QL	Rating QR
Rating QM	Rating QS
Rating QN	Rating QT
Rating QO	Rating QU
Rating QP	Rating QV
Rating QQ	Rating QW
Rating QR	Rating QX
Rating QS	Rating QY
Rating QT	Rating QZ
Rating QU	Rating RA
Rating QV	Rating RB
Rating QW	Rating RC
Rating QX	Rating RD
Rating QY	Rating RE
Rating QZ	Rating RF
Rating RA	Rating RG
Rating RB	Rating RH
Rating RC	Rating RI
Rating RD	Rating RJ
Rating RE	Rating RK
Rating RF	Rating RL
Rating RG	Rating RM
Rating RH	Rating RN
Rating RI	Rating RO
Rating RJ	Rating RP
Rating RK	Rating RQ
Rating RL	Rating RR
Rating RM	Rating RS
Rating RN	Rating RT
Rating RO	Rating RU
Rating RP	Rating RV
Rating RQ	Rating RW
Rating RR	Rating RX
Rating RS	Rating RY
Rating RT	Rating RZ
Rating RU	Rating SA
Rating RV	Rating SB
Rating RW	Rating SC
Rating RX	Rating SD
Rating RY	Rating SE
Rating RZ	Rating SF
Rating SA	Rating SG
Rating SB	Rating SH
Rating SC	Rating SI
Rating SD	Rating SJ
Rating SE	Rating SK
Rating SF	Rating SL
Rating SG	Rating SM
Rating SH	Rating SN
Rating SI	Rating SO
Rating SJ	Rating SP
Rating SK	Rating SQ
Rating SL	Rating SR
Rating SM	Rating SS
Rating SN	Rating ST
Rating SO	Rating SU
Rating SP	Rating SV
Rating SQ	Rating SW
Rating SR	Rating SX
Rating SS	Rating SY
Rating ST	Rating SZ
Rating SU	Rating TA
Rating SV	Rating TB
Rating SW	Rating TC
Rating SX	Rating TD
Rating SY	Rating TE
Rating SZ	Rating TF
Rating TA	Rating TG
Rating TB	Rating TH
Rating TC	Rating TI
Rating TD	Rating TJ
Rating TE	Rating TK
Rating TF	Rating TL
Rating TG	Rating TM
Rating TH	Rating TN
Rating TI	Rating TO
Rating TJ	Rating TP
Rating TK	Rating TQ
Rating TL	Rating TR
Rating TM	Rating TS
Rating TN	Rating TT
Rating TO	Rating TU
Rating TP	Rating TV
Rating TQ	Rating TW
Rating TR	Rating TX
Rating TS	Rating TY
Rating TT	Rating TZ
Rating TU	Rating UA
Rating TV	Rating UB
Rating TW	Rating UC
Rating TX	Rating UD
Rating TY	Rating UE
Rating TZ	Rating UF
Rating UA	Rating UG
Rating UB	Rating UH
Rating UC	Rating UI
Rating UD	Rating UJ
Rating UE	Rating UK
Rating UF	Rating UL
Rating UG	Rating UM
Rating UH	Rating UN
Rating UI	Rating UO
Rating UJ	Rating UP
Rating UK	Rating UQ
Rating UL	Rating UR
Rating UM	Rating US
Rating UN	Rating UT
Rating UO	Rating UU
Rating UP	Rating UV
Rating UQ	Rating UW
Rating UR	Rating UX
Rating US	Rating UY
Rating UT	Rating UZ
Rating UU	Rating VA
Rating UV	Rating VB
Rating UW	Rating VC
Rating UX	Rating VD
Rating UY	Rating VE
Rating UZ	Rating VF
Rating VA	Rating VG
Rating VB	Rating VH
Rating VC	Rating VI
Rating VD	Rating VJ
Rating VE	Rating VK
Rating VF	Rating VL
Rating VG	Rating VM
Rating VH	Rating VN
Rating VI	Rating VO
Rating VJ	Rating VP
Rating VK	Rating VQ
Rating VL	Rating VR
Rating VM	Rating VS
Rating VN	Rating VT
Rating VO	Rating VU
Rating VP	Rating VV
Rating VQ	Rating VW
Rating VR	Rating VX
Rating VS	Rating VY
Rating VT	Rating VZ
Rating VU	Rating WA
Rating VV	Rating WB
Rating VW	Rating WC
Rating VX	Rating WD
Rating VY	Rating WE
Rating VZ	Rating WF
Rating WA	Rating WG
Rating WB	Rating WH
Rating WC	Rating WI
Rating WD	Rating WJ
Rating WE	Rating WK
Rating WF	Rating WL
Rating WG	Rating WM
Rating WH	Rating WN
Rating WI	Rating WO
Rating WJ	Rating WP
Rating WK	Rating WQ
Rating WL	Rating WR
Rating WM	Rating WS
Rating WN	Rating WT
Rating WO	Rating WU
Rating WP	Rating WV
Rating WQ	Rating WW
Rating WR	Rating WX
Rating WS	Rating WY
Rating WT	Rating WZ
Rating WU	Rating XA
Rating WV	Rating XB
Rating WW	Rating XC
Rating WX	Rating XD
Rating WY	Rating XE
Rating WZ	Rating XF
Rating XA	Rating XG